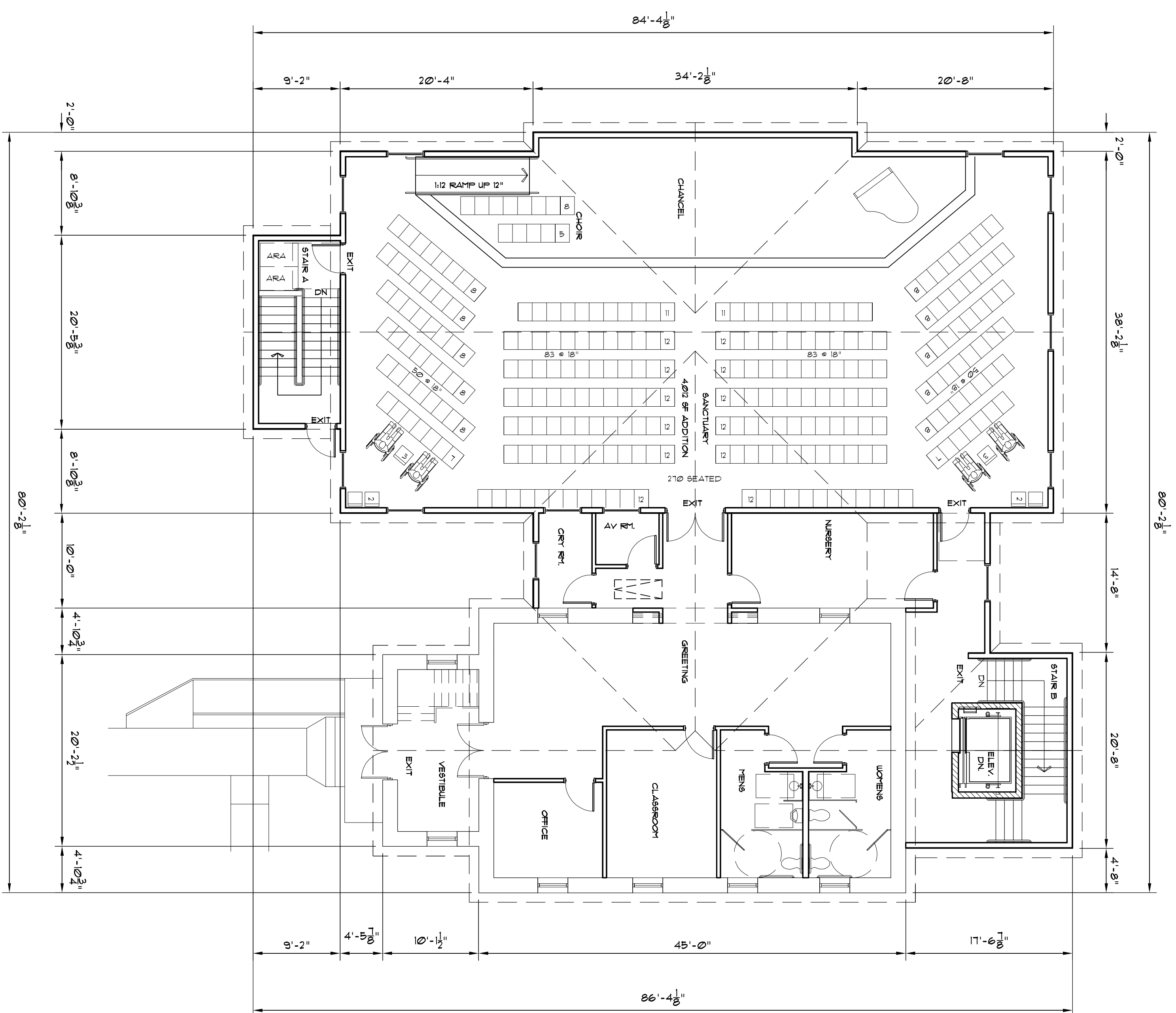
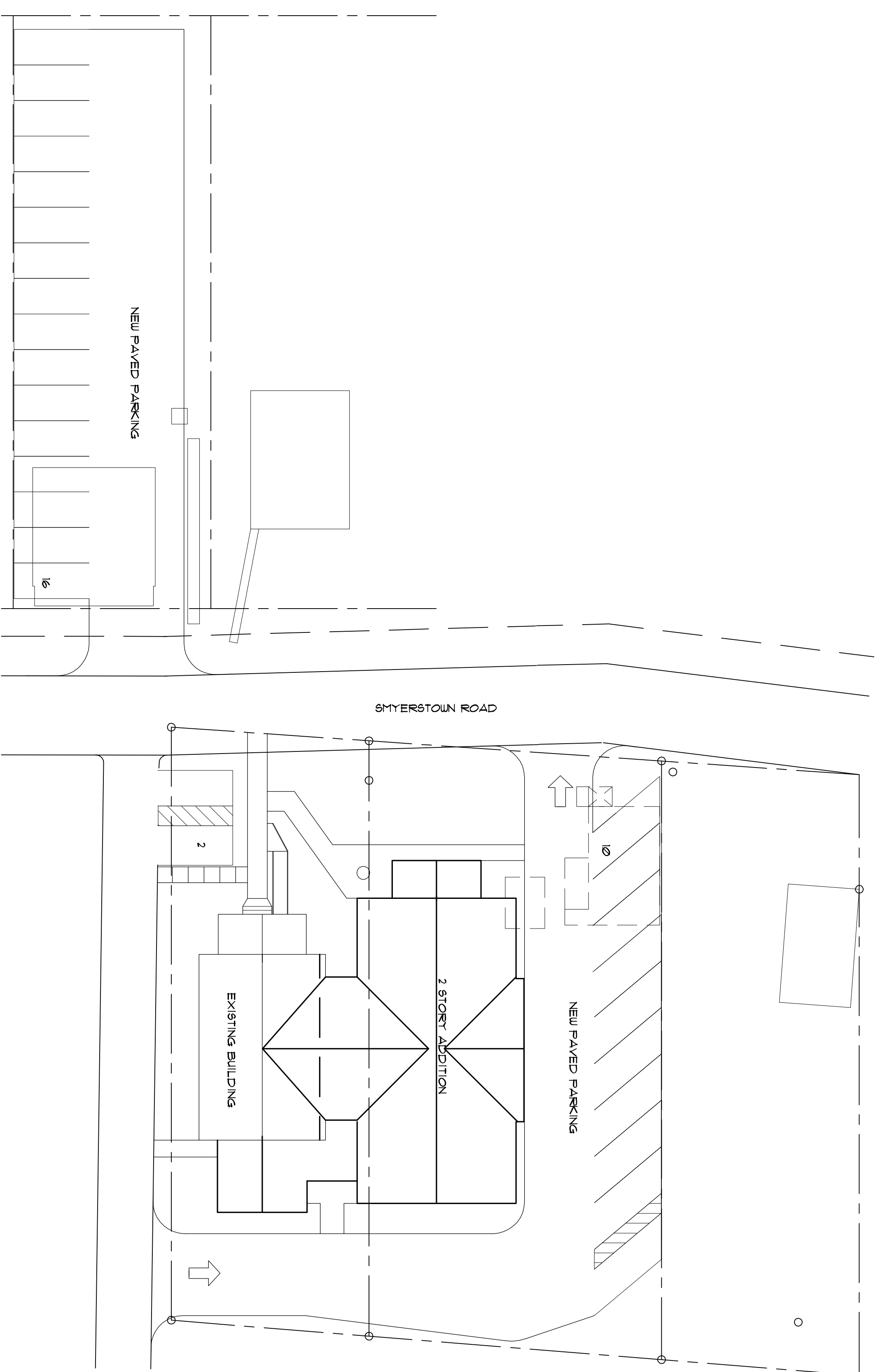


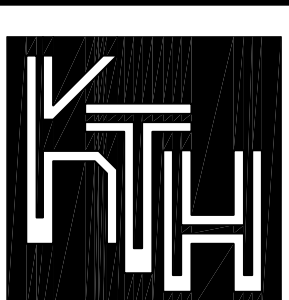
OPTION #2 PROPOSED BASEMENT FLOOR PLAN  
SCALE: 1/8" = 1'-0"



OPTION #2 PROPOSED FIRST FLOOR PLAN  
SCALE: 1/8" = 1'-0"



OPTION #2 PROPOSED SITE LAYOUT  
SCALE: 1/8" = 1'-0"



**KTH ARCHITECTS, INC.**

1741 KIWANIS TRAIL  
DUBOIS, PENNSYLVANIA 15801  
PHONE (814) 371-1541  
FAX (814) 371-8801  
www.ktharch.com

NICHOLAS TEPLICA, AIA  
ROBERT M. HALLSTROM, AIA  
JOHN P. ADAMS, AIA  
JEROME BANKOVICH, JR., AIA  
ETHAN J. HINE, AIA

**ROSSITER CALVARY U.M. CHURCH**

ADDITIONS AND RENOVATIONS  
OPTION #2 PROPOSED BASEMENT AND FIRST FLOOR PLANS, AND SITE PLAN

OCTOBER 24, 2007

49 SMYERSTOWN ROAD ROSSITER INDIANA COUNTY PA 15772 JOB NO.: 07078A